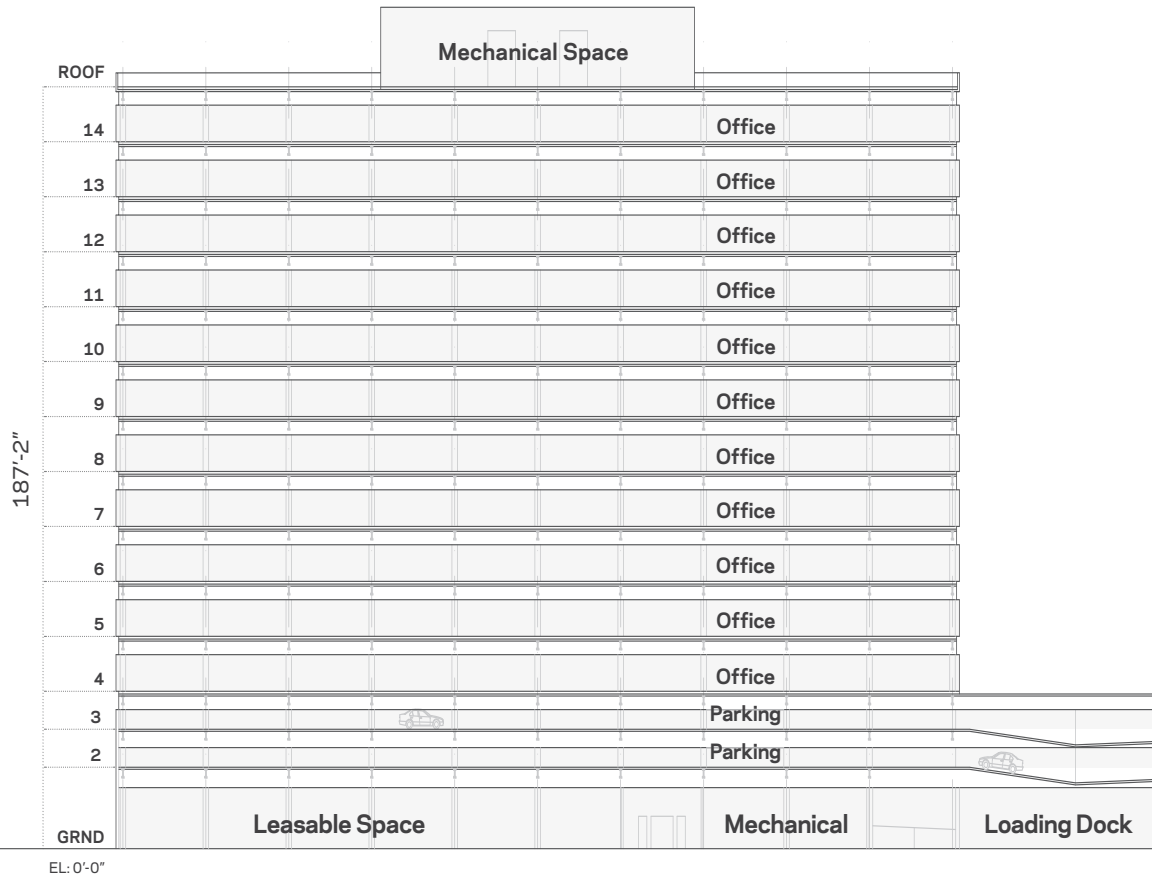


All dimensions and areas are approximate and are subject to change due to job conditions. Dimensions may vary from floor to floor. Doors and windows may vary.

**Pier Six Leasing**  
Newport  
Jersey City, New Jersey

**Marylou Berk**  
Head of Commercial Real Estate  
MBerk@LeFrak.com  
(212) 708-6650

**Jamie LeFrak**  
Principal  
(212) 708-6670

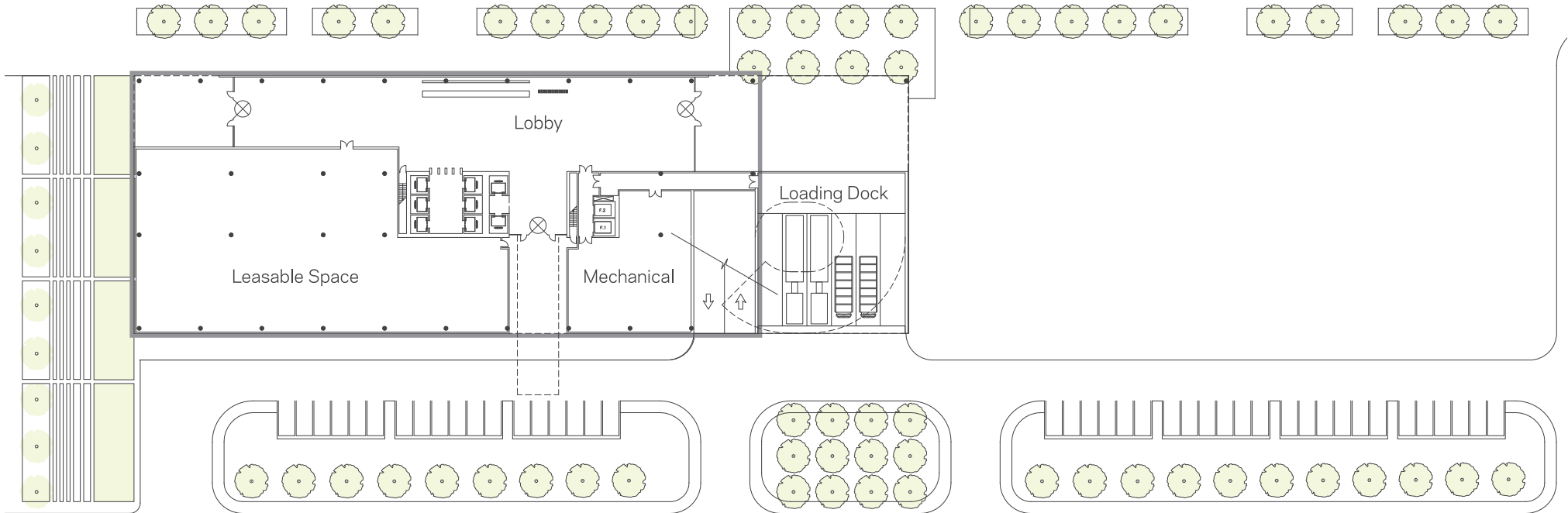


All dimensions and areas are approximate and are subject to change due to job conditions. Dimensions may vary from floor to floor. Doors and windows may vary.

**Pier Six Leasing**  
Newport  
Jersey City, New Jersey

**Marylou Berk**  
Head of Commercial Real Estate  
MBerk@LeFrak.com  
(212) 708-6650

**Jamie LeFrak**  
Principal  
(212) 708-6670

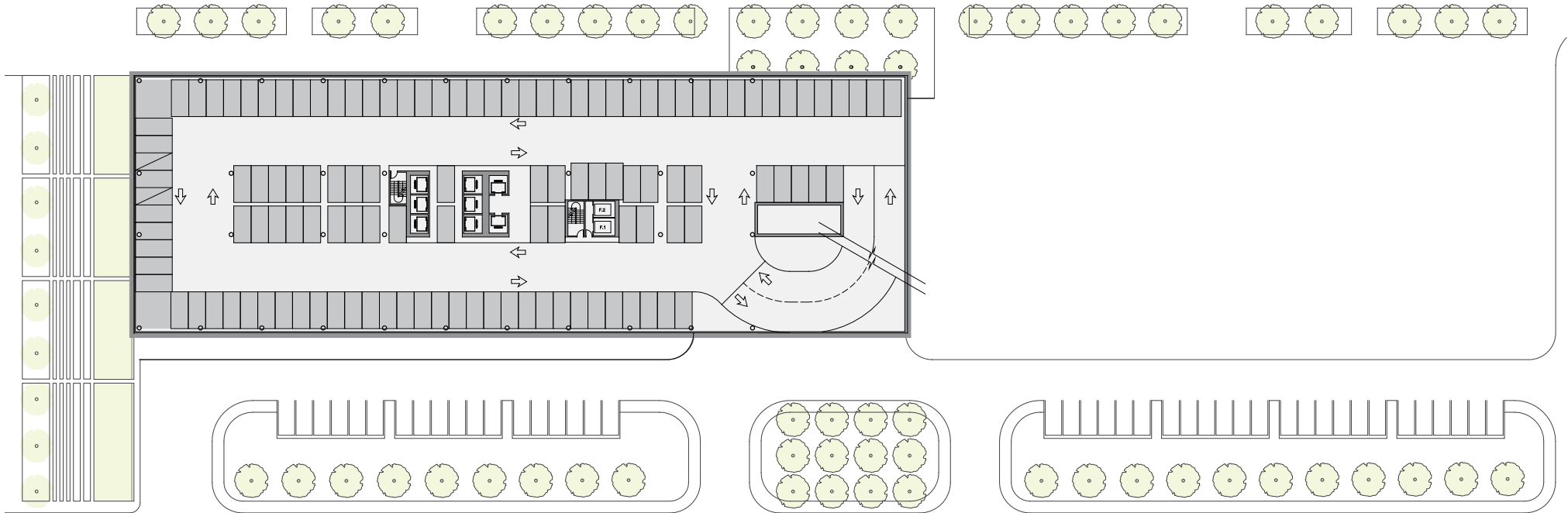


All dimensions and areas are approximate and are subject to change due to job conditions. Dimensions may vary from floor to floor. Doors and windows may vary.

**Pier Six Leasing**  
Newport  
Jersey City, New Jersey

**Marylou Berk**  
Head of Commercial Real Estate  
MBerk@LeFrak.com  
(212) 708-6650

**Jamie LeFrak**  
Principal  
(212) 708-6670



All dimensions and areas are approximate and are subject to change due to job conditions. Dimensions may vary from floor to floor. Doors and windows may vary.

**Pier Six Leasing**  
Newport  
Jersey City, New Jersey

**Marylou Berk**  
Head of Commercial Real Estate  
MBerk@LeFrak.com  
(212) 708-6650

**Jamie LeFrak**  
Principal  
(212) 708-6670